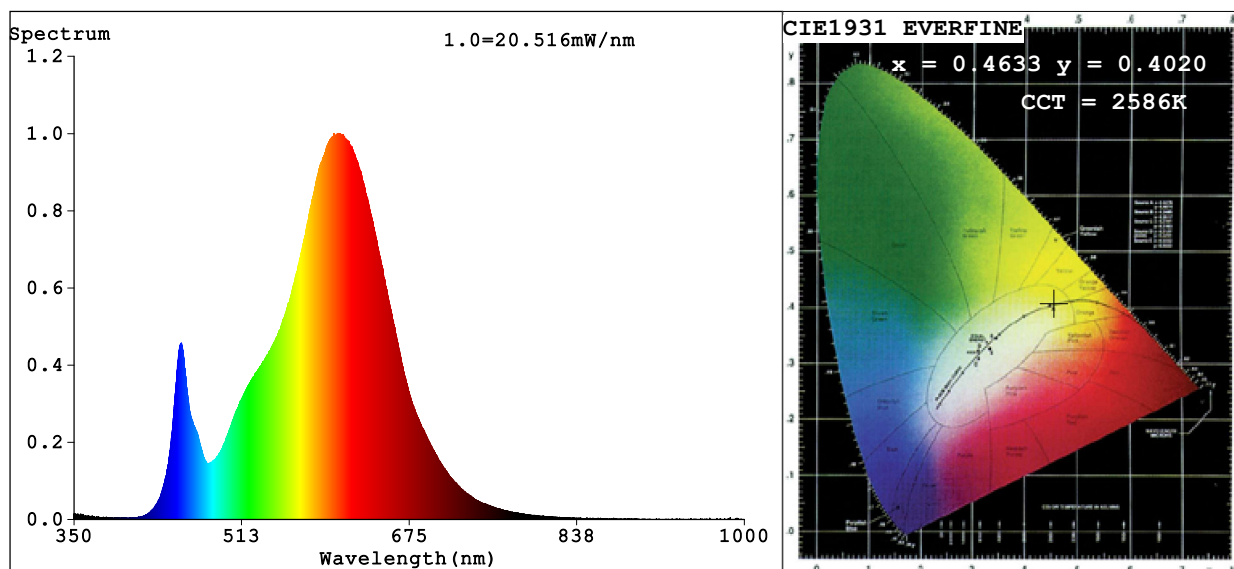


Spectrum Test Report



Color Parameters:

Chromaticity Coordinate: $x=0.4633$ $y=0.4020$ $u'=0.2687$ $v'=0.5246$
CCT=2586K (Duv=-0.0034) Dominant WL:Ld =586.0nm Purity=59.7%
Ratio:R=26.1% G=71.7% B=2.2%; Peak WL:Lp=605.5nm FWHM=110.0nm
Render Index:Ra=81.2 CRI=76.7 TM30:Rf=80 Rg=97
R1 =80 R2 =93 R3 =93 R4 =78 R5 =81 R6 =92 R7 =78
R8 =54 R9 =6 R10=84 R11=77 R12=77 R13=84 R14=97 R15=73

Photo Parameters:

Flux = 902.9 lm Eff. : 18.73 lm/W Fe = 2.858 W

Electrical parameters:

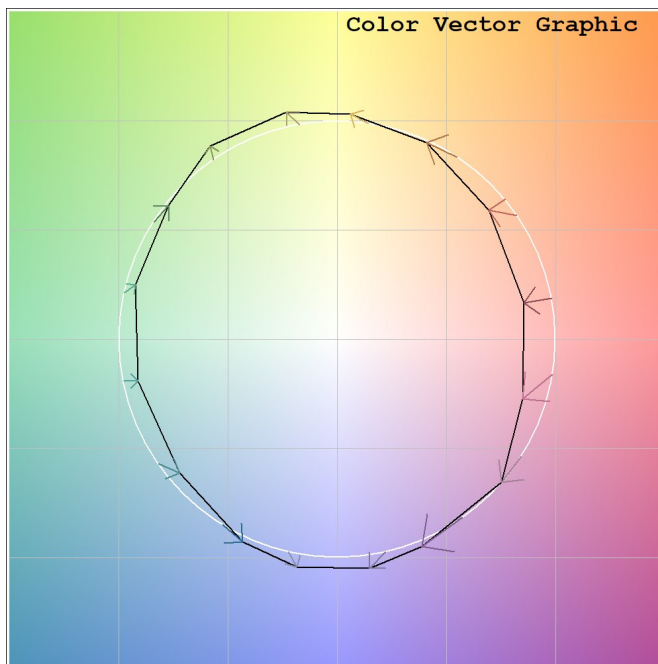
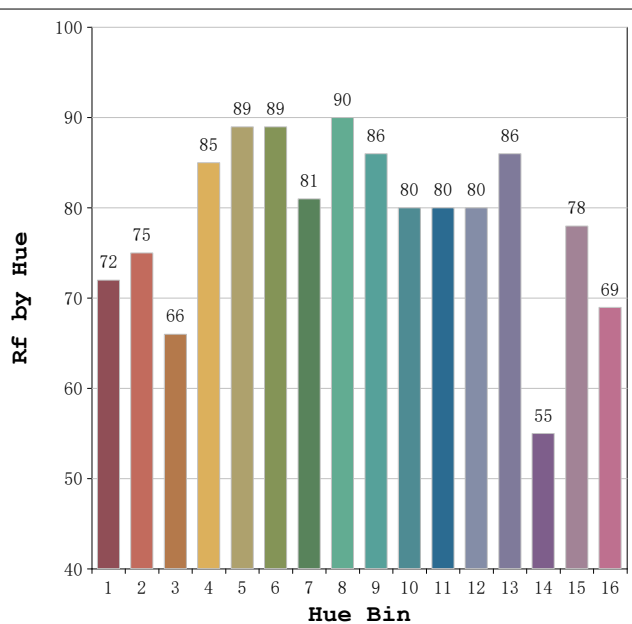
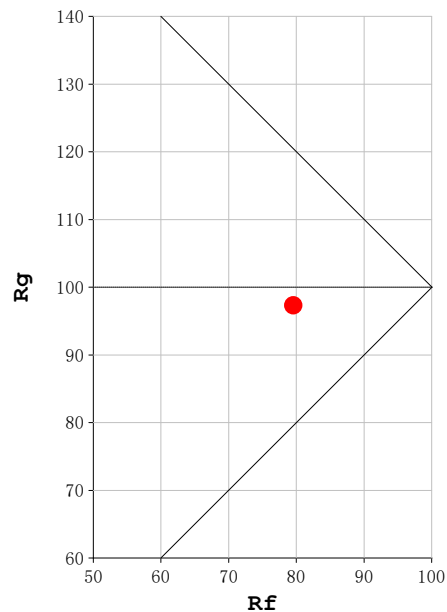
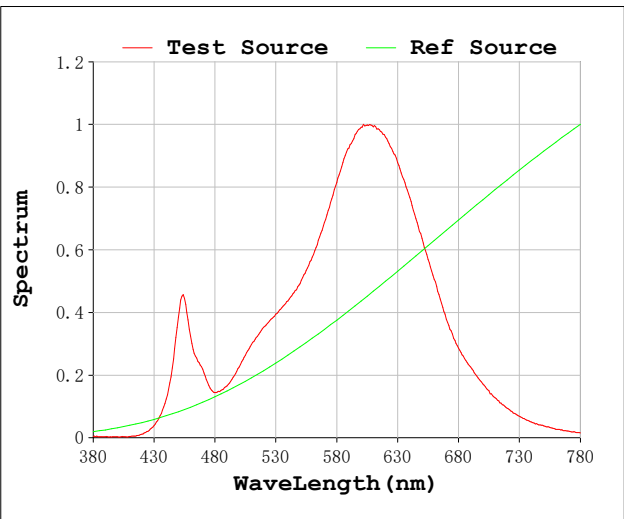
V = 23.998 V I = 2.008 A P = 48.20 W PF = 1.000

Status: Integral T = 1160 ms Ip = 47141 (72%)

Model:Ecoled Neón Sing 2700
Tester:Sergio Carneros
Temperature:20Deg
Manufacturer:Luz Negra

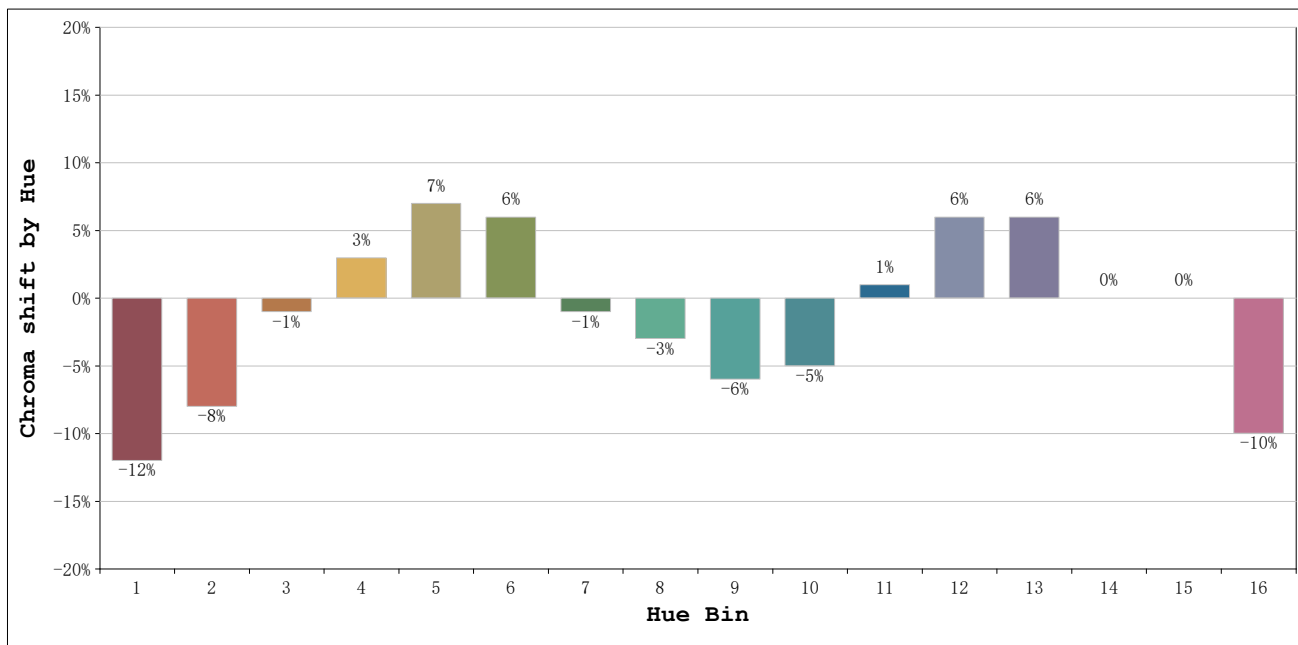
Number: 10.257
Date:2025-03-24 12:16:25
Humidity:50%
Remarks:500cm de neón

Rf: 80 **CCT: 2586 K** **u': 0.2687**
Rg: 97 **Duv: -0.0034** **v': 0.5246**



Model:Ecoled Neón Sing 2700
 Tester:Sergio Carneros
 Temperature:20Deg
 Manufacturer:Luz Negra

Number: 10.257
 Date:2025-03-24 12:16:25
 Humidity:50%
 Remarks:500cm de neón



			Graphic shift(%)	
Hue Bin	Hue Angle	Rf	Chroma	Hue
1	0.0° - 22.5°	72	-12	1
2	22.5° - 45.0°	75	-8	9
3	45.0° - 67.5°	66	-1	15
4	67.5° - 90.0°	85	3	9
5	90.0° - 112.5°	89	7	5
6	112.5° - 135.0°	89	6	-1
7	135.0° - 157.5°	81	-1	-9
8	157.5° - 180.0°	90	-3	-4
9	180.0° - 202.5°	86	-6	1
10	202.5° - 225.0°	80	-5	9
11	225.0° - 247.5°	80	1	12
12	247.5° - 270.0°	80	6	5
13	270.0° - 292.5°	86	6	-8
14	292.5° - 315.0°	55	0	-22
15	315.0° - 337.5°	78	0	-14
16	337.5° - 360.0°	69	-10	-12

Model:Ecoled Neón Sing 2700
 Tester:Sergio Carneros
 Temperature:20Deg
 Manufacturer:Luz Negra

Number: 10.257
 Date:2025-03-24 12:16:25
 Humidity:50%
 Remarks:500cm de neón